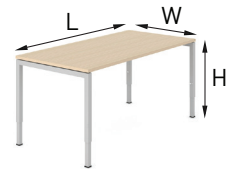


# NOVA H desks



H 620-850



L 1200; 1400; 1600; 1800  
W 800

## FEATURES

- Manual height adjustment according to individual needs
- Easy to assemble and disassemble - "metal to metal" construction
- Just one tool for assembling (DIN911 S5)

## QUALITY STANDARD

- LST EN 527-1:2011
- LST EN 527-2:2017
- LST EN 1730:2012

## TECHNICAL INFORMATION

### Desktop

- 25 mm MFC (melamine) with 2 mm ABS edging;
- 10 mm gap between the legs and the desktop;
- 40 mm gap between the desktops in back to back benches (depth of benches – 1440/1640).

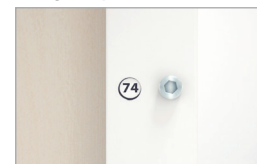
### Metal beam

- Metal tube - 40x20 mm;
- With welded metal plates for leg fixing;
- Powder coated metal, colour matches the legs.

### Legs

- Welded metal tube - 40x40 mm;
- Powder coated metal;
- Plastic feet (without levelling);
- Manual height adjustment (fixed with bolts).

### Leg type



## GUARANTEE

- 5 years

## Desktop type



Plain desktop



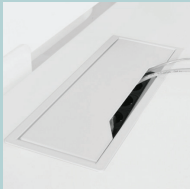
Desktops with a scallop for wire management



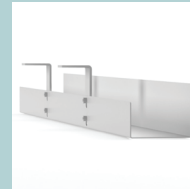
Desktops with a cut-out for grommet and wire management

## Must be ordered

(for desktop with cut-out)

Metal grommet:  
317x119 mm,  
H=27 mm

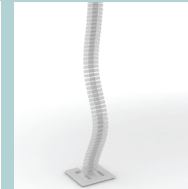
## Optional

Power socket  
blocks

Cable trays



Cable clips



Cable ducts