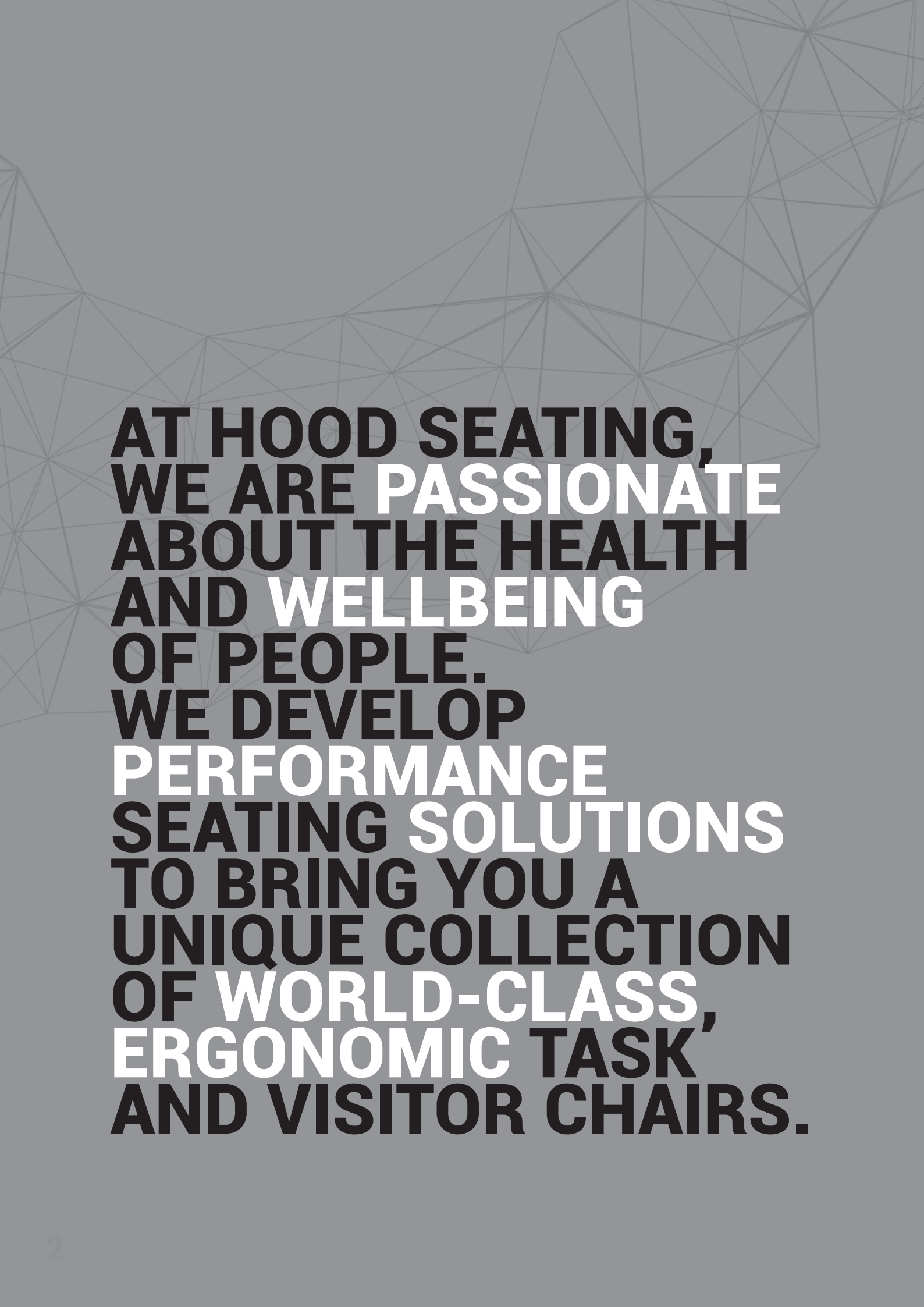




i29 TASK
PERFORMANCE
SEATING

HOOD
HOOD SEATING




**AT HOOD SEATING,
WE ARE PASSIONATE
ABOUT THE HEALTH
AND WELLBEING
OF PEOPLE.
WE DEVELOP
PERFORMANCE
SEATING SOLUTIONS
TO BRING YOU A
UNIQUE COLLECTION
OF WORLD-CLASS,
ERGONOMIC TASK,
AND VISITOR CHAIRS.**



i29
PERFORMANCE
SEATING

i29 PHILOSOPHY

WE HAD A VISION...
TO CREATE SIMPLE-TO-USE
ERGONOMIC CHAIRS
THAT WOULD FIT EVERYBODY,
EVERYWHERE. RESOURCES ARE
PRECIOUS, SO A SUSTAINABLE,
LONG-LIFE DESIGN WAS
ESSENTIAL WHILST OFFERING
AFFORDABILITY FOR ALL.
AT HOOD, WE DELIVER OUR
RANGE OF UNIQUE CHAIRS
QUICKLY TO OUR RESPECTED
DEALER NETWORK WITH A
PERSONAL SERVICE AND
COMMITMENT TO LONG-TERM
RELATIONSHIPS.



We all deserve to have our bodies supported correctly. Hood Seating encourages dynamic movement to improve our blood flow so we feel great and are focused to work. Hood delivers healthy, affordable seating for everyone.

Where once ergonomics was about preventing or mitigating harm, it is now about helping people be more healthy, productive and active.

High-end seating manufacturers recognised the importance of muscle movement and engineer chairs to encourage people to shift position whilst seated. This movement stimulates the muscles; increases blood flow, relieves pressure points, and helps with concentration.

The sophisticated chair mechanisms that enable this movement are no longer the exclusive domain of expensive chairs and can now be found throughout the Hood Seating range. Healthy seating is no

longer the luxury for the few but an affordable solution for everyone.

Comfortable employees typically work better; are happier and reduce the sick days an organisation can suffer. Hygiene, too, is improved by using modern materials such as mesh which offers ventilation and is easy to clean.

Our unique patented chairs have been designed so that every component can be removed and replaced to deliver extreme long life. Replacing damaged parts is good for our environment too.

You can be confident your Hood chair will always deliver at peak performance and deliver outstanding return on investment.



i29 PERFORMANCE SEATING

**ERGO-REVOLUTION
WITH ITS PATENTED
LUMBAR AND PELVIC
SUPPORT SYSTEM AND
INTUITIVE CONTROLS,
USERS OF ANY SIZE AND
SHAPE GET THE RIGHT
SUPPORT AND DYNAMIC
MOVEMENT FROM THE
MOMENT THEY SIT IN THE
i29 CHAIR.**



Packed full of features the i29 offers a range of frame finishes and options, allowing you to customise the chair to your own style.

The i29 boasts one of the most intuitive mechanisms on the market. With three easy-to-use pictorial controls on the right-hand side operating seat height, seat depth and advanced dynamic movement, the mechanism can also be locked at any angle. This works like a knee tilt mechanism with the first articulation at the underside of the thighs and the second point under your sitting bones (ischial tuberosities), delivering constant support in active mode and reducing the pressure on the underside of the user's thighs.

The extendable direct tension control adjusts the resistance of the chair to comfortably balance users weighing from 8 to 23.5 stone. Our fully patented floating lumbar support automatically moves with you when in dynamic mode, giving continuous lumbar support. The chair's split back is designed to deliver independent upper back support as well as ensuring the patented lumbar system protects the lower regions – keeping the user's pelvis

rotated. The back can easily be height adjusted for each user's anthropometric measurements by releasing two buttons on the back of the chair.

The i29 is fitted with an aluminium five-star base as standard. The chair can also be enhanced with optional features. Two different styles of optional headrests are available and may be retro-fitted – the Executive headrest is ideal for 24/7 use and managerial areas, and the Ergonomic headrest provides more adjustment.

The 4D multifunctional arms incorporate three buttons to increase armrest length, width and height which can be locked in position. The angle of the armpads can also be adjusted to suit. If customers prefer their chair to have no arms the i29's can be removed easily leaving the design uncompromised and safe for users. Another useful option is a coat hanger which can be attached to the back of the chair keeping jackets and coats uncrumpled and safely off the floor.

i29 DESIGN YOUR PERFECT CHAIR

SIT DOWN | STAND OUT
56 TEXTILE OPTIONS
MULTI-FUNCTIONAL ARMS
TWO HEADRESTS
COAT HANGER
CHOICE OF FRAME FINISHES
OPTIONAL INTEGRATED LEGREST



i29 FEATURES

ERGO-ENGINEERED

THE i29 HAS BEEN DESIGNED TO CONTINUOUSLY SUPPORT THE HUMAN BODY AND ENCOURAGE DYNAMIC MOVEMENT WITHOUT COMPROMISING STYLE. I29 PROVIDES SUPERB ERGONOMIC SUPPORT AND DELIVERS COMFORT TO THE A RANGE OF ANTHROPOMETRIC BODY TYPES IN A WIDE RANGE OF POSITIONS, MAKING IT THE IDEAL SITTING SOLUTION FOR A VARIETY OF TASKS AND ENVIRONMENTS.



The i29's dual spring mech delivers infinite tilt-lock positions and its floating lumbar provides superb lower-back support.

FEATURES

- A** Optional headrests with height and angle adjustment (can be retro-fitted).
- B** Upper back designed for great thoracic support.
- C** Aluminium height-adjustable backrest locking in three positions.
- D** Floating lumbar and pelvic supporting lower back.
- E** Intuitive, pictorial three lever control to activate seat height, seat slide and dynamic movement, allowing users infinite lock positions.
- F** Extendable direct tension control.
- G** Alloy mechanism finishes.
- H** Dual pivot mechanism.
- I** Rounded waterfall seat front.
- J** Multifunctional armrests with soft touch pads.
- K** Aluminium five-star base as standard.



OPTIONS

- White frame.
- Coat hanger.
- Integrated legrest.
- Mesh or foam upholstery option for seat.
- Ergonomic (height & angle) or wider executive (height-adjustable) headrests.

CERTIFIED 5459

BS 5459-2:2000+A2:2008 Specification for performance requirements and tests for office furniture. Office pedestal seating for use by persons weighing up to 150kg and for use up to 24 hours a day.

i29 SPEC

MODELS



WITHOUT HEADREST
Shown with mesh seat and 4D arms



WITH ERGONOMIC HEADREST
Shown with fabric seat and 4D arms



WITH EXECUTIVE HEADREST
Shown with mesh seat and 4D arms

OPTIONS



ERGONOMIC HEADREST
Height and tilt adjustment



EXECUTIVE HEADREST
Height adjustment



MESH SEAT
In a choice of Hood meshes



UPHOLSTERED CUSHION SEAT
Fabric or leather



COAT HANGER
Retro-fittable

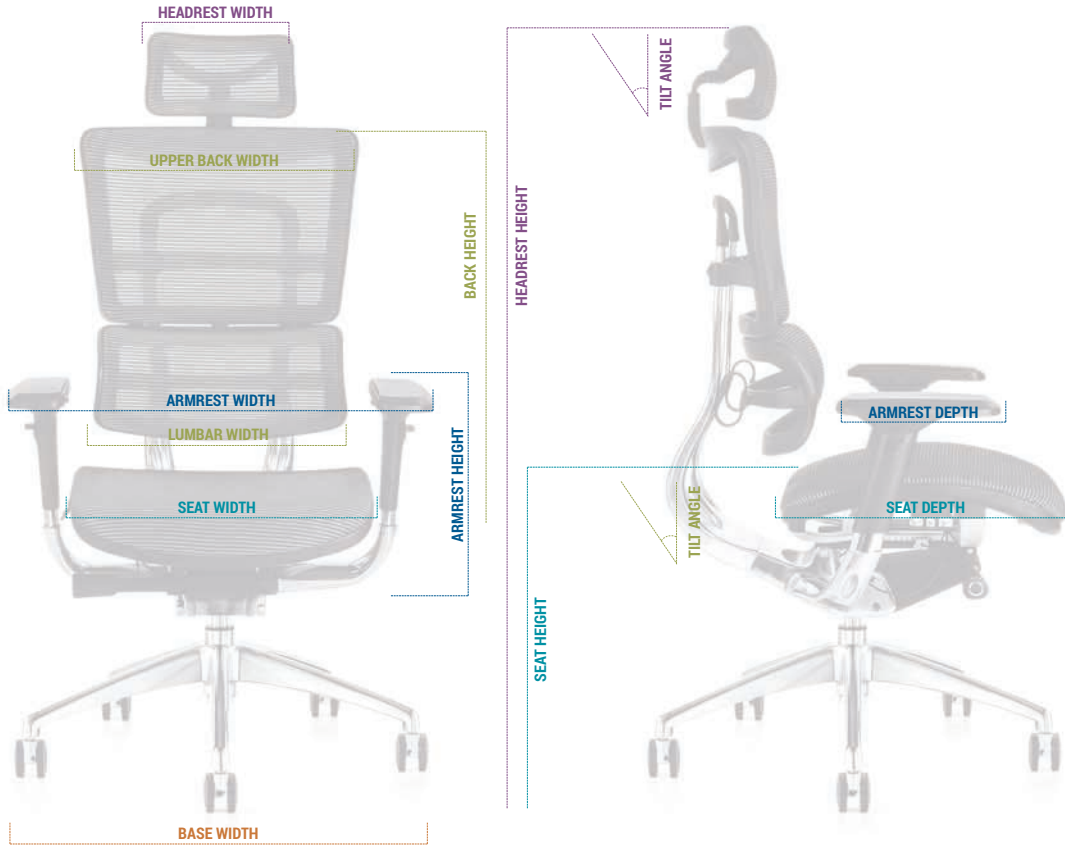


INTEGRATED LEGREST



OTTOMAN
Separate legrest

i29 DIMENSIONS



DESIGNED TO ADJUST TO MOST ANTHROPOMETRIC MEASUREMENTS

ERGONOMIC HEADREST DIMENSIONS

WIDTH	270 mm
HEIGHT ADJUSTMENT	90–130 mm
ANGLE	40 °

EXECUTIVE HEADREST DIMENSIONS

WIDTH	400 mm
HEIGHT	185–220 mm

BACK DIMENSIONS

UPPER BACK WIDTH	500 mm
LUMBAR WIDTH	440 mm
HEIGHT (5 SETTINGS)	570–620 mm
ANGLE	45 °

SEAT DIMENSIONS

STANDARD HEIGHT ADJUSTMENT	440–530 mm
OPTIONAL TALL STEM HEIGHT ADJUSTMENT	480–570 mm
WIDTH	490 mm
DEPTH	510–550 mm

3D ARMREST DIMENSIONS

DEPTH	270–320 mm
HEIGHT ADJUSTABLE (6 SETTINGS)	150–230 mm
HEIGHT (LOWEST TO HIGHEST)	650–720 mm
ANGLE	40 °

4D ARMREST DIMENSIONS

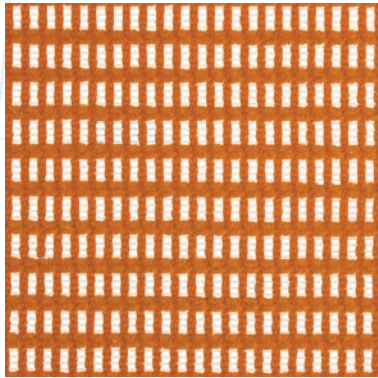
WIDTH	460–520 mm
DEPTH	270–320 mm
HEIGHT ADJUSTABLE (6 SETTINGS)	150–230 mm
ANGLE	40 °

BASE DIMENSIONS

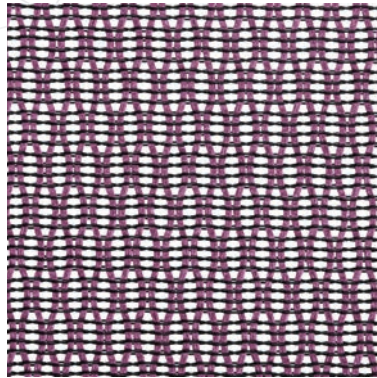
DIAMETER Ø	700 mm
------------	--------

i29 TEXTILES

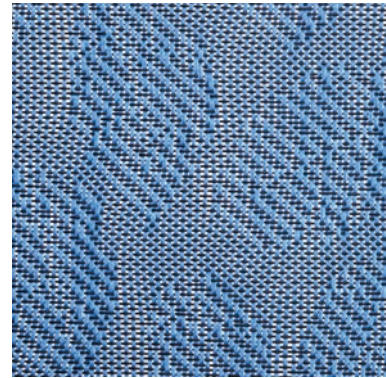
We have selected a range of durable and contemporary textiles from a selection of patterned meshes to luxurious leather and soft fabric.



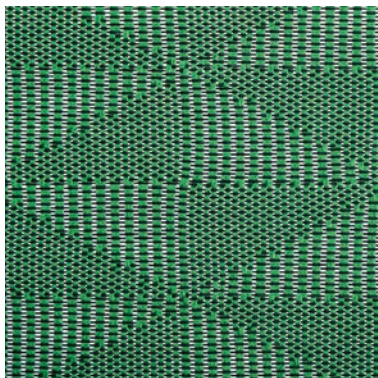
SOFT WEAVE MESH



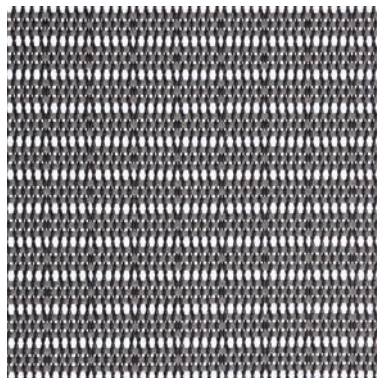
DIAMOND MESH



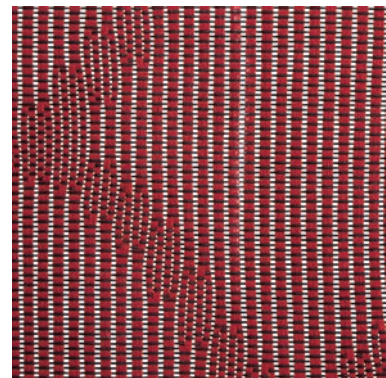
LEAF MESH



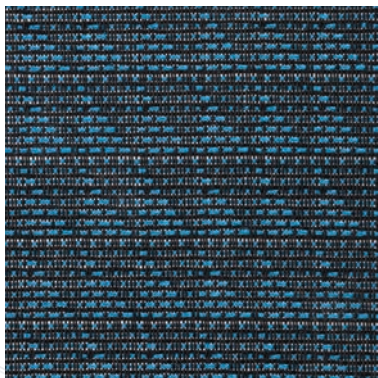
KITE MESH



STRIPE MESH



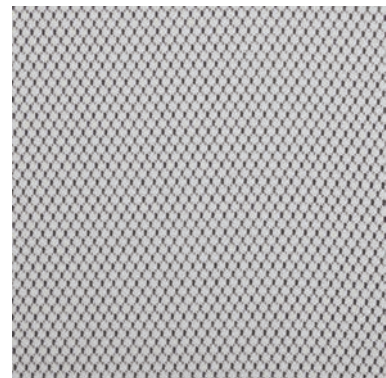
JUNGLE MESH



TRIANGLE MESH



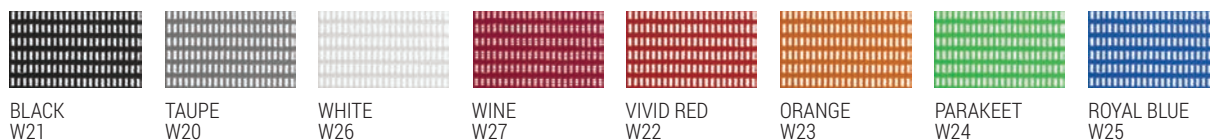
LEATHER



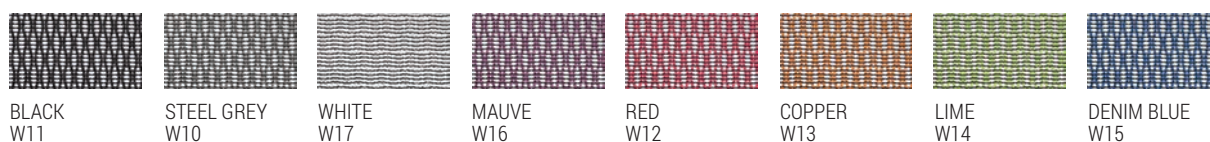
FABRIC

i29 comes in a range of textile colours and a choice of frame and base finishes to allow you to personalise your chair.

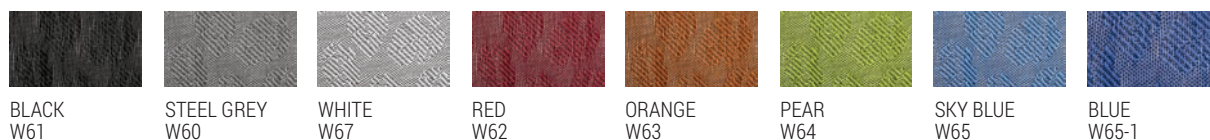
SOFT WEAVE MESH



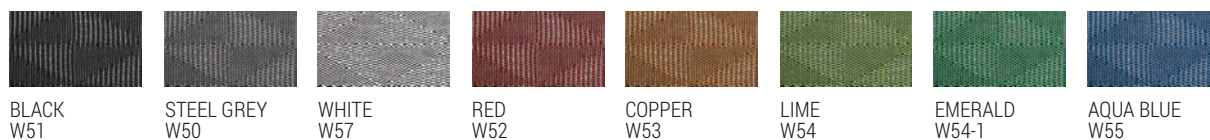
DIAMOND MESH



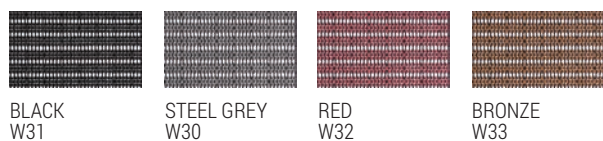
LEAF MESH



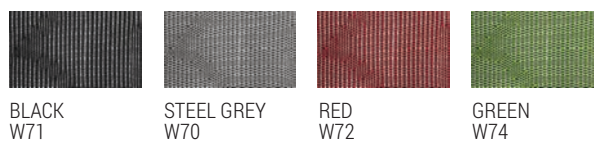
KITE MESH



STRIPE MESH



JUNGLE MESH



TRIANGLE MESH



LEATHER



FABRIC



Colours may not be exact due to print processes. Please speak to your Hood Seating representative for upholstery samples.

THE HOOD SEATING TASK COLLECTION



VC35



F94



M58



V46



i29



OP44

SHOWROOM:

The Vault,
8-11 St Johns Lane,
London,
EC1M 4BF

HEAD OFFICE:

The Smart Centre,
Tenth Avenue,
Zone 3 Deeside Industrial Park,
Flintshire, CH5 2UA.

HOOD
HOOD SEATING

T: 0333 123 2000

E: SALES@HOODSEATING.COM

W: WWW.HOODSEATING.COM