

AIR Executive meeting tables

Design by Gediminas Juška | Lithuania



FEATURES

- Easy and fast assembling / disassembling - "metal to metal" construction
- Just one tool for assembling (DIN911 S4)
- Bolted connections (without screws)

TECHNICAL INFORMATION

Tabletop

- 120 mm made from chipboard covered in wood veneer;
- 25 mm chipboard covered in wood veneer with 2 mm edging;
- Table height: 780 mm – for 120 mm tabletop; 740 mm – for 25 mm tabletop;
- Rectangular cut-out for metal grommet and wire management (25 mm tabletop).

Legs

- Welded metal construction from 12 mm tube;
- Powder coated metal or polished chrome;
- Plastic feet with height levelling (+10 mm);
- Fastened with bolts - "metal to metal" construction;
- Thin legs contrived for wire management inside the metal tubes (table with 120 mm tabletop).

Metal beam (25 mm tabletop)

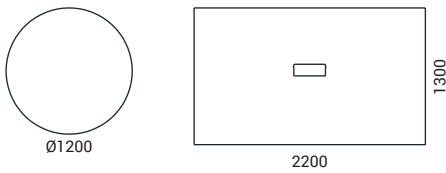
- Metal tube – 40x20 mm;
- Powder coated metal, white colour by default.

Details and accessories (included, 120 mm tabletop)

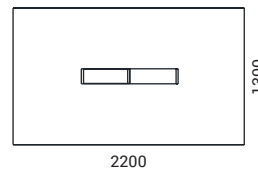
- Built-in open shelves covered in wood veneer - on the short sides of 120 mm tabletop, 300 mm depth;
- 440x140 mm, H=100 mm open box - inside covered in wood veneer;
- Grommet for wire management made of 19 mm chipboard covered in wood veneer with thin edging, soft closing hinges;
- Built-in power socket block – 3 electrical sockets (EU, UK standard) and 1 port for internet cable.

RANGE

25 mm tabletop



120 mm tabletop



Must be ordered (for tabletop with cut-out)



Metal grommet:
317x119 mm, H=27 mm

Optional



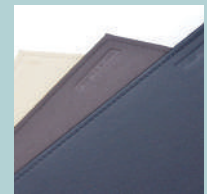
Power socket
blocks



Cable trays



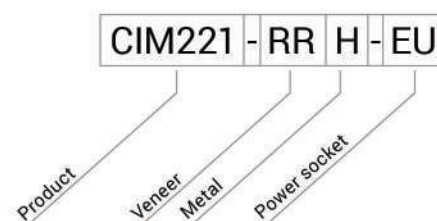
Cable ducts






Leather table
mats

ORDERING EXAMPLE

Code structure



	Description	W	D	H	Code	Price, GBP (RRP)	
						Veneer: AA KK RR V1	
						Metal: E A H	
						Power socket: EU UK	
	Meeting table (120mm thick desktop) with built-in power socket block (8 seats)	2200	1300	780	CIM221	2744	2888
						Veneer: AA KK RR V1	
						Metal: E A H	
	Meeting table (6 seats)	Ø 1200		740	CIM120	512	868
	Meeting table (8 seats) with cut-out for grommet (ZNZ010 must be ordered)	2200	1300	740	CIM220	908	1264